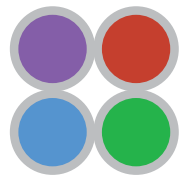


LAN Set-Up

AURA III • SPECTRA III • CELESTA light engines®



lumencor®

Setting a Static IP On Your Computer for TCP Communication to your Light Engine

Windows 7, 8, or 10

STEP 1: GO TO

- Start Menu,
- Control Panel,
- Network & Internet, and/or
- Network & Sharing Center

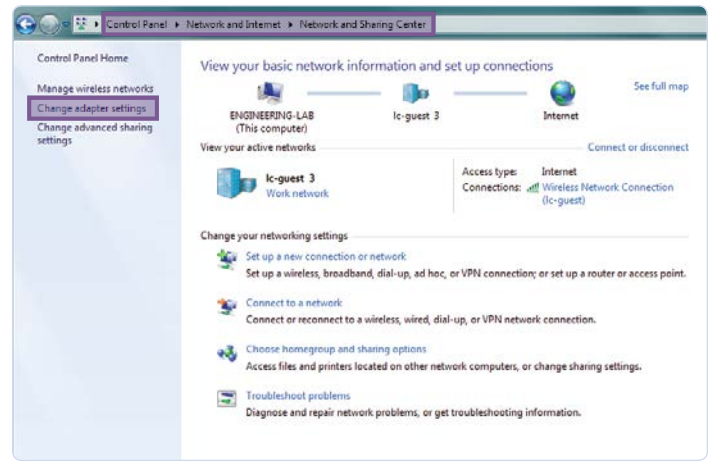


IMAGE: Step 1 and 2

STEP 2: CLICK

- Change Adapter Settings

STEP 3a: RIGHT-CLICK

- On Local Area Connection

STEP 3b: CLICK

- Properties (in pop-up)

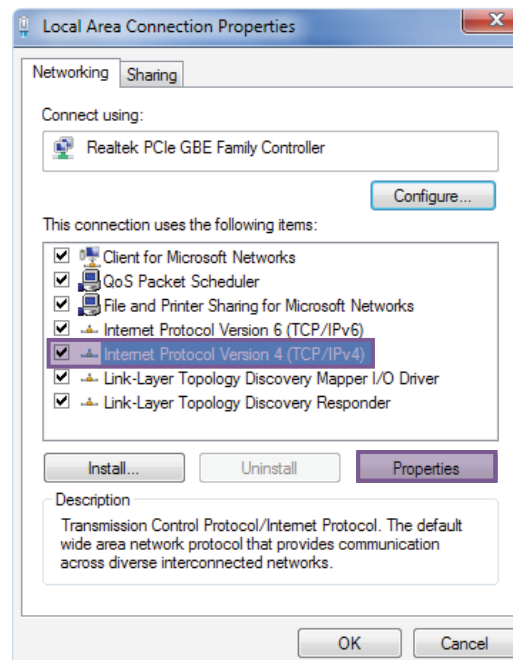


IMAGE: Step 4

STEP 4a: SELECT

- Internet Protocol Version 4 (TCP/IPv4)

STEP 4b: CLICK

- Properties button

LAN Set-Up

AURA III • SPECTRA III • CELESTA light engines®



STEP 5a: SELECT

- Use the following IP Address
 - **IP Address:** 192.168.201.201
 - **Subnet Mask:** 255.255.255.0
- Default Gateway and DNS Server are OK to leave blank

STEP 5b: CLICK

- Ok

STEP 5c: CLOSE

- Local Area Connection Properties window

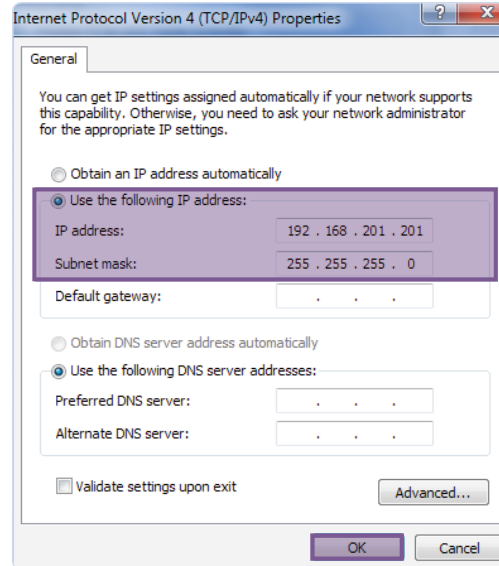


IMAGE: Step 5

STEP 6a: CONNECT

- The RJ45 cable supplied with the light engine between the LAN port on the light engine and an Ethernet port on the computer

STEP 6b: TYPE

- The light engine IP address into any web browser address bar to access the resident control GUI
- **Default IP Address:** 192.168.201.200

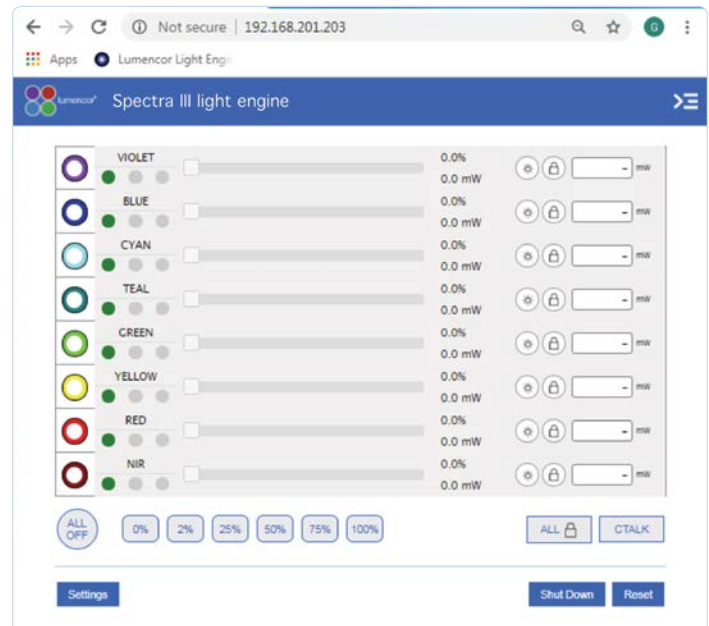


IMAGE: Step 6b



GET IN TOUCH

Lumencor, Inc.
14940 NW Greenbrier Parkway, Beaverton, OR 97006 USA • T 503.213.4269 • www.lumencor.com
©2018 Lumencor, Inc. • Effective Date: 08/2018 • 54-10046.MD